

# Human LAG3/CD223 Protein

Cat. No. LAG-HM131

## Description

<b>Source</b>	Recombinant Human LAG3/CD223 Protein is expressed from HEK293 with His tag at the C-Terminus. It contains Leu23-Gly434.
<b>Accession</b>	P18627-1
<b>Molecular Weight</b>	The protein has a predicted MW of 45.5 kDa. Due to glycosylation, the protein migrates to 55-65 kDa based on Bis-Tris PAGE result.
<b>Endotoxin</b>	Less than 1EU per $\mu$ g by the LAL method.
<b>Purity</b>	> 95% as determined by Bis-Tris PAGE > 95% as determined by HPLC

## Formulation and Storage

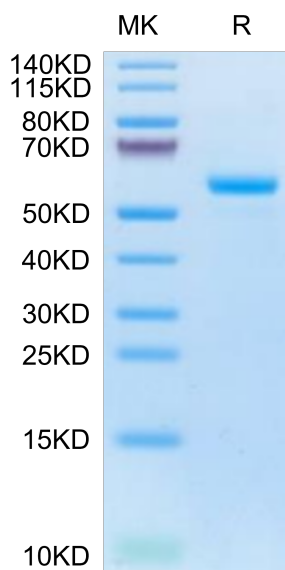
<b>Formulation</b>	Lyophilized from 0.22 $\mu$ m filtered solution in PBS (pH 7.4). Normally 8% trehalose is added as protectant before lyophilization.
<b>Reconstitution</b>	Centrifuge the tube before opening. Reconstituting to a concentration more than 100 $\mu$ g/ml is recommended. Dissolve the lyophilized protein in distilled water.
<b>Storage</b>	-20 to -80°C for 12 months as supplied from date of receipt. -80°C for 3 months after reconstitution. Recommend to aliquot the protein into smaller quantities for optimal storage. Please minimize freeze-thaw cycles.

## Background

LAG-3, is a protein which in humans is encoded by the LAG3 gene, which is a cell surface molecule with diverse biologic effects on T cell function. It is an immune checkpoint receptor and as such is the target of various drug development programs by pharmaceutical companies seeking to develop new treatments for cancer and autoimmune disorders.

## Assay Data

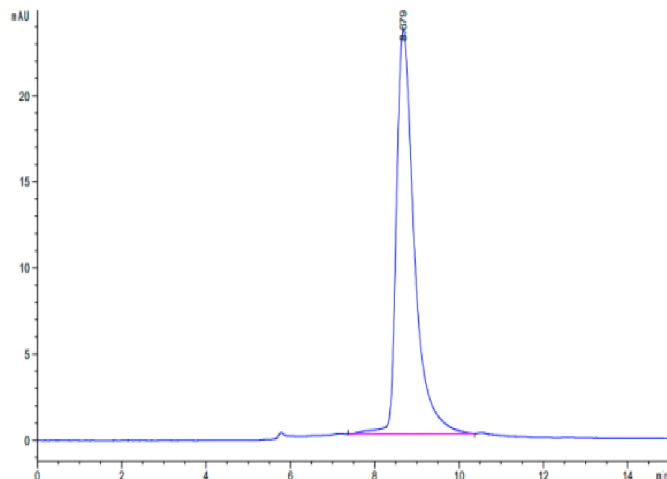
### Bis-Tris PAGE



Human LAG3 on Bis-Tris PAGE under reduced condition. The purity is greater than 95%.

### SEC-HPLC

Assay Data

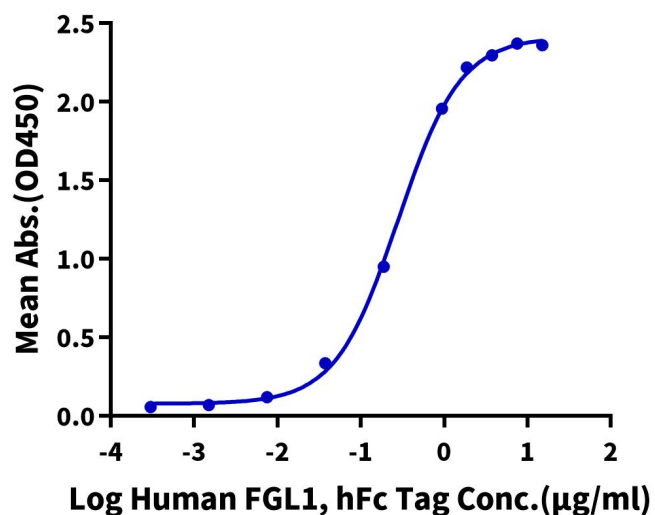


The purity of Human LAG3 is greater than 95% as determined by SEC-HPLC.

ELISA Data

**Human LAG3, His Tag ELISA**

0.5µg Human LAG3, His Tag Per Well

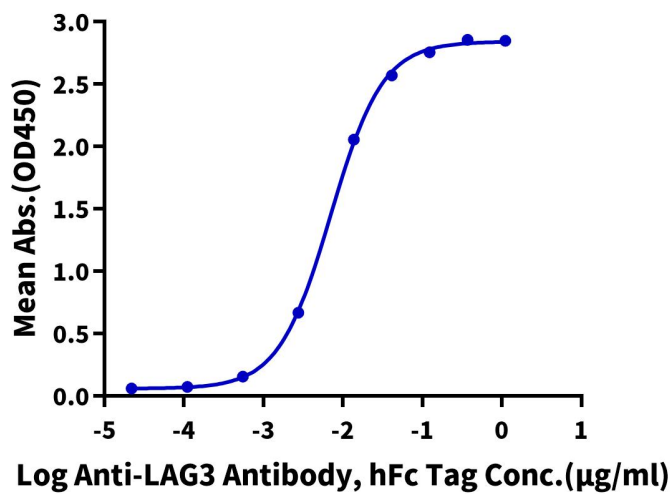


Immobilized Human LAG3, His Tag at 5µg/ml (100µl/Well) on the plate. Dose response curve for Human FGL1, hFc Tag with the EC50 of 0.28µg/ml determined by ELISA (QC Test).

ELISA Data

### Human LAG3, His Tag ELISA

0.05µg Human LAG3, His Tag Per Well



Immobilized Human LAG3, His Tag at 0.5µg/ml (100µl/well) on the plate. Dose response curve for Anti-LAG3 Antibody, hFc Tag with the EC50 of 7.0ng/ml determined by ELISA.